

# 2023 2024 State Legislative Agenda



City of Bothell™



Crisis Receiving Center



Housing



Downtown Revitalization



Transportation

## Crisis Receiving Center in North King County

Bothell, Kenmore, Kirkland, Lake Forest Park, and Shoreline have formed a unique coalition to improve our regional behavioral health crisis continuum and have discovered a critical flaw in the existing system: the lack of alternatives to hospital emergency rooms, jails, or inpatient stays for individuals in crisis. Our coalition is partnering with Connections Health Solutions to design, build, and operate a comprehensive behavioral health crisis center in north King County. The facility will serve individuals of all acuities, accept 100% of first responder drop-offs, and provide walk-in access to urgent psychiatric care. Bothell requests the State's support to fund the financial gap for construction and startup costs of the North King County Crisis Receiving Center.

## Housing

The City of Bothell is committed

to doing its part to address the region's greatest challenge, a dearth of housing. The City welcomes the State's partnership via grant programs and funding tools to increase the number and types of housing for all income levels. The City supports policies and incentivizes that increase private housing construction including, but not limited to, reducing legal liability for condominium developers.







City of Bothell™



### Bothell Way Multimodal Project

Bothell Way runs through downtown Bothell and connects State Route 522 and Interstate 405 in Canyon Park, crossing both Snohomish and King Counties. This project consists of mobility improvements to include widening the roadway, support transit services, create protected bike lanes, and install sidewalks to create a safer and more reliable means of travel for the community.

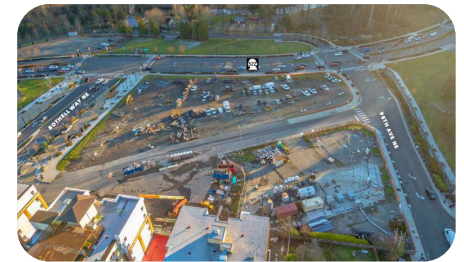
Three fish passable culverts will be included in the project. The City is grateful for the \$7 million dedicated toward improvements along Bothell Way NE within the Move Ahead WA package and requests that the funds be phased in accordance with the project timeline in order to maximize the usage of federal dollars.



### Transportation Demand Management at Canyon Park

Canyon Park is the City's regional growth center and a major employment hub that will continue to grow. It is currently served by Community Transit, and Sound Transit will have expanded service via an inline BRT station along I-405. Canyon Park is primed to accommodate growth in the region, and Bothell is planning accordingly.

The Canyon Park Subarea Plan includes a transportation demand management (TDM) program. The City is grateful for the \$250,000 the Legislature allocated to support TDM startup costs. The City requests that the funds be re-appropriated to the new biennium. Additionally, the City supports a robust investment in the State's Regional Mobility Grant Program, which provides funding for TDM programs.



### Downtown Revitalization

The City is thrilled with the pending redevelopment of Block D, located in the southwest corner of Downtown, at the intersection of State Route 522 and Bothell Way NE. Without funding for cleanup, the City would not have been able to sell the property to a developer who is constructing a mixed-use building with 369 apartment homes and 9,800 square feet of retail space. The restoration of this property was possible because of the City's commitment, the State's support through the Department of Ecology's Remedial Action Grant (RAG) Program, and a direct appropriation of \$1.5 million in 2019. To continue the Downtown Revitalization, the City requests the State's continued investment in the RAG Program, adequate support for Ecology staff, and common-sense policy reforms that allow resources to be expended more efficiently.